

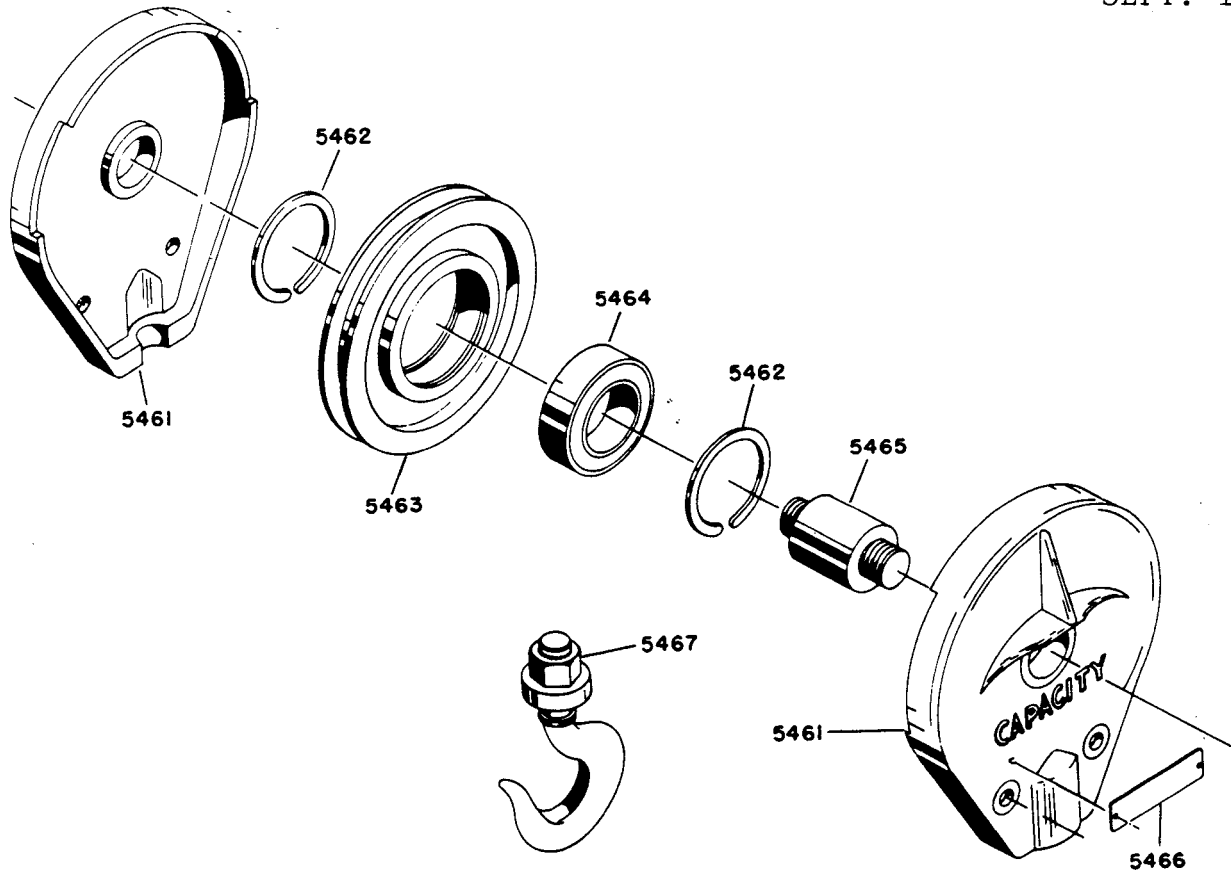


2 PART BOTTOM BLOCK
 SERIES A, B, C, D, E, Y, Z

F5

1-1

SEPT. 1980



ITEM NUMBER	DESCRIPTION	PART NUMBER	QUANTITY
5460	Bottom Block Cmpl. (Less 5466)	25-00076-011	1
5461	Sheave Frame	23-06874-002	1
5462	Snap Ring	22-06498-011	2
5463	Sheave	24-00148-011	1
5464	Ball Bearing	6-30-050-310-0	1
5465	Sheave Pin	23-00193-009	1
*	Spacer	22-02265-010	2
5466	Capacity Plate 3 Ton	22-08627-016	2
5467	Load Hook	23-00109-016	1
	Hook Nut	6-14-007-010-0	1
	Thrust Bearing	6-30-161-016-0	1
*	Safety Latch	22-09929-003	1
*	NOT SHOWN		

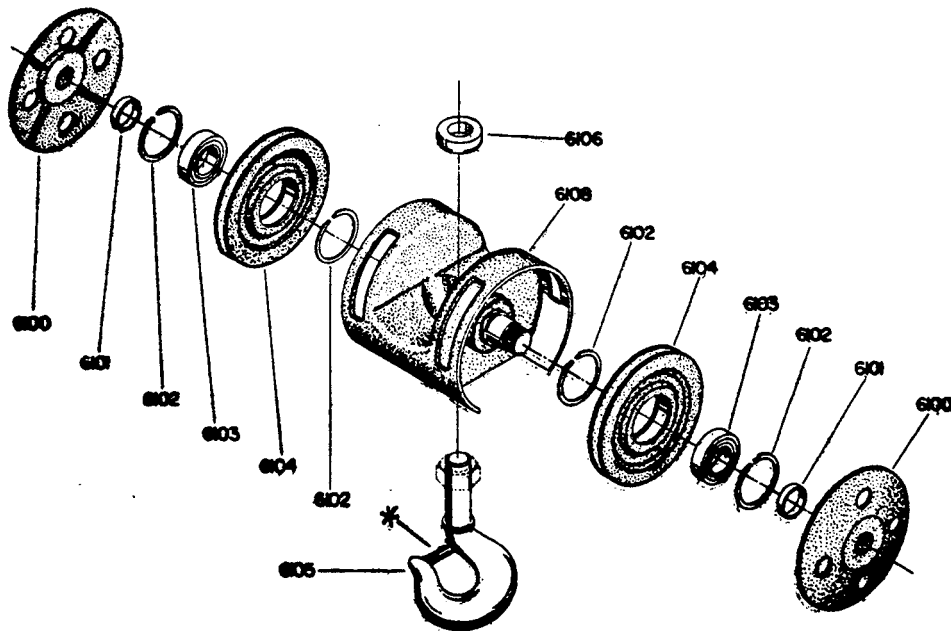
F5

4 PART BOTTOM BLOCK

1-2

SERIES A, B, C, D, E, Y, Z

SEPT. 1980



ITEM NUMBER	DESCRIPTION	PART NUMBER	QUANTITY
6100	Sheave Cover - 5 Ton	24-00145-001	2
	Sheave Cover - 6 Ton	24-00144-001	2
	Sheave Cover - 7.5 Ton	24-03844-001	2
6101	Spacer	22-02265-006	2
6102	Snap Ring	22-06498-011	4
6103	Ball Bearing	6-30-050-310-1	2
6104	Sheave	24-00148-011	2
6105	Load Hook - 5 & 6 Ton	24-00146-001	1
	Hook Nut - 5 & 6 Ton	6-14-009-015-0	1
	Load Hook - 7.5 Ton	24-00147-001	1
	Hook Nut - 7.5 Ton	6-14-007-015-0	1
6106	Thrust Bearing - 5 & 6 Ton	6-30-160-026-0	1
*	Thrust Bearing - 7.5 Ton	6-30-160-028-0	1
	Safety Latch - 5 & 6 Ton	22-09917-011	1
	Vulcan Hooks		1
	Safety Latch - 5 & 6 Ton	22-11171-013	1
	U - W Hooks		1
	Safety Latch - 7.5 Ton (All)	22-09917-012	1
	Sheave Frame - 5 & 6 Ton	25-00073-006	1
6108	Sheave Frame - 7.5 Ton	25-00071-003	1
6109	Bottom Block Complete	25-03031-006	1
	Capacity Plate - 5 Ton	22-11456-004	2
	Capacity Plate - 6 Ton	22-08964-702	2
	Capacity Plate - 7.5 Ton	22-11456-006	2

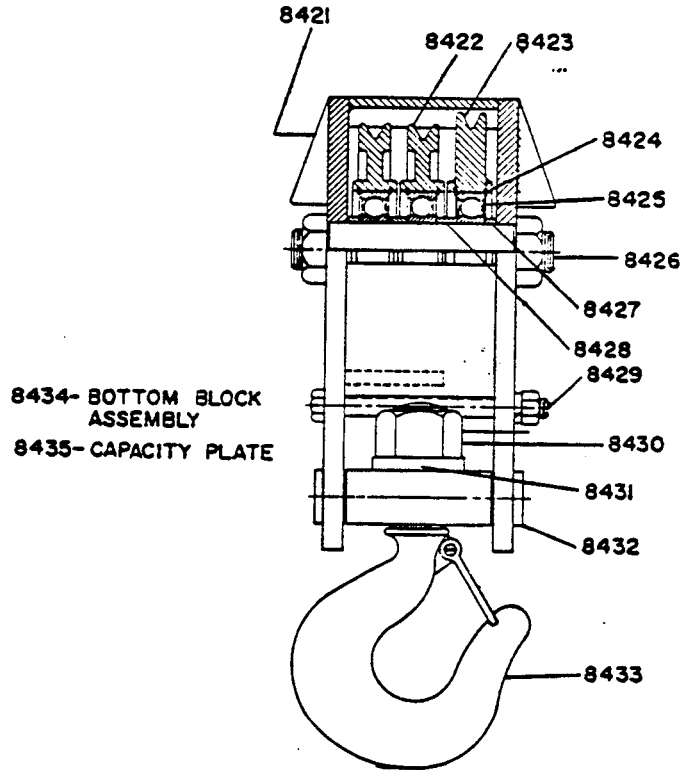
*Verify Hook Identifying Markings With Customer On 5 & 6 Ton Units & Supply Corresponding Latch Kit When Ordered Separately.

6 PART BOTTOM BLOCK 10 TON
 SERIES A, B, C, D, Y, Z

F5

1-3

SEPT. 1980



ITEM NUMBER	DESCRIPTION	PART NUMBER	QUANTITY
8421	Bottom Block Frame	24-05012-002	1
8422	Rope Sheave	24-00148-011	2
8423	Rope Sheave	24-04392-002	1
8424	Snap Ring	22-06498-011	6
8425	Ball Bearing	6-30-050-310-1	3
	Sheave Pin And	22-07224-007	1
8426	Jam Nuts	6-14-008-034-0	2
8427	Bearing Spacer (Short)	22-02265-007	2
8428	Bearing Spacer (Long)	22-02265-008	2
8429	Hex Head Bolt	6-02-008-128-1	2
	Lock Washers	6-23-001-047-0	2
	Hex Nut	6-14-008-008-0	2
8430	Hex Nut	6-14-007-015-0	1
8431	Thrust Bearing	6-30-160-028-0	1
8432	Trunion	23-01566-002	1
8433	Load Hook	24-03481-001	1
	Latch	22-09929-006	1
8434	Bottom Block Assembly	24-03812-014	1
8435	Capacity Plate 10 Ton	22-11456-007	2

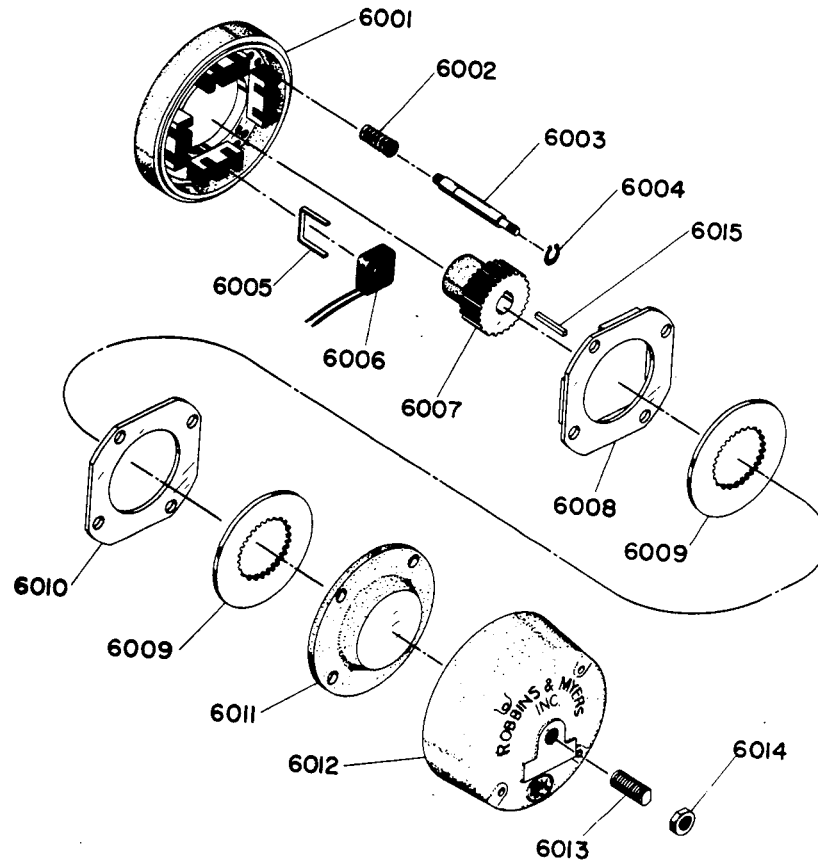
F5

M-7 BRAKE ASS'Y

2-1

SERIES A, B, C, D, E, Y, Z

SEPT. 1980



ITEM NUMBER	DESCRIPTION	PART NUMBER	QUANTITY
6000	Brake Ass'y w/22-08269-002 Coil	27-16043-001	1
6001	Brake Head	24-04759-001	1
6002	Spring	22-03615-008	4
6003	Stud	23-03645-027	4
6004	Snap Ring	22-06497-032	4
6005	Coil Support	22-08471-001	4
6006	Coil 230V	22-08269-001	4
	Coil 115V	22-08269-002	4
	Coil 290V	22-08269-004	4
6007	Hub	23-06258-001	1
6008	Armature Plate Ass'y	23-06098-005	1
6009	Friction Disc	22-03607-013	3
6010	Intermediate Thrust Plate	23-03648-012	2
6011	End Thrust Disc	24-04754-002	1
6012	Brake Cover	25-02207-003	1
6013	Adjustment Screw	22-03612-006	1
6014	Jam Nut	6-14-008-032-0	1

F5

3-1

SEPT. 1980

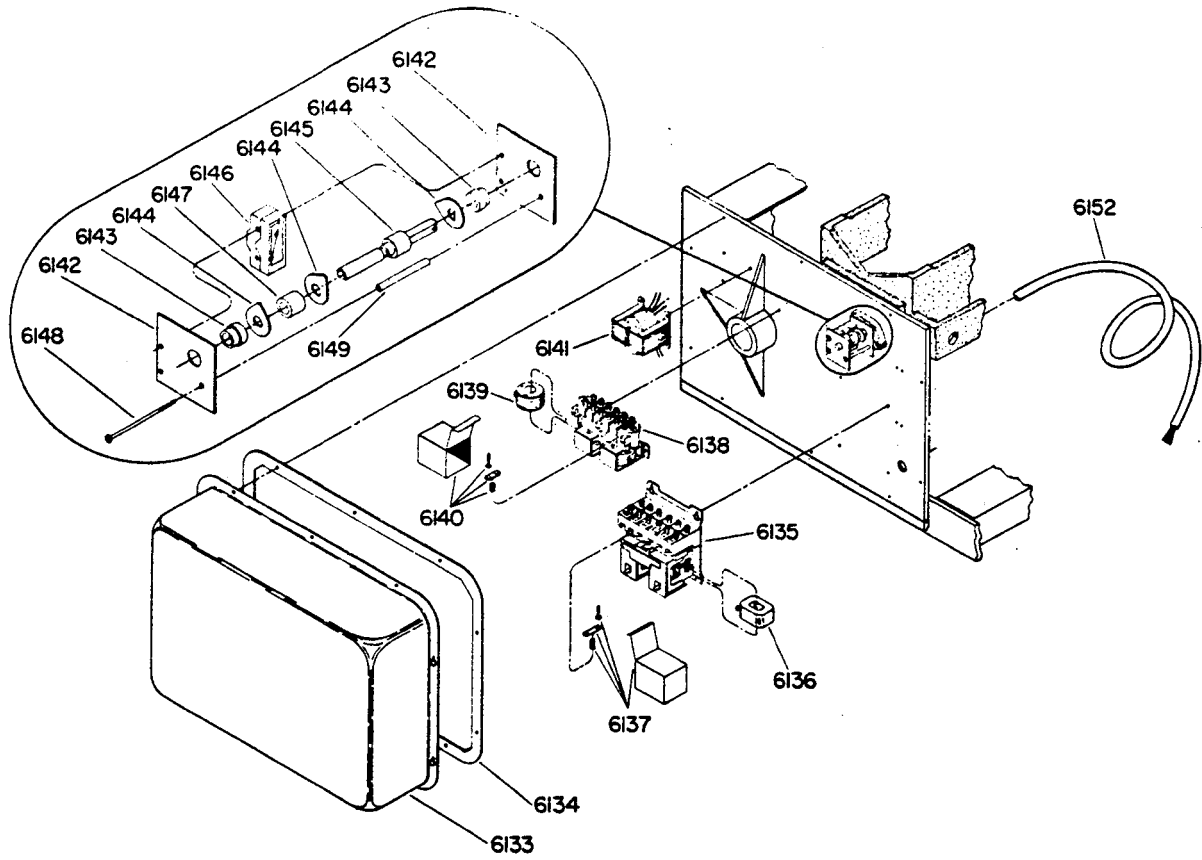
THIS PAGE LEFT BLANK INTENTIONALLY

F5

HOIST CONTROLS

4-1

SEPT. 1980



HOIST CONTROLS
SERIES A & B & E

F5
4-2
SEPT. 1980

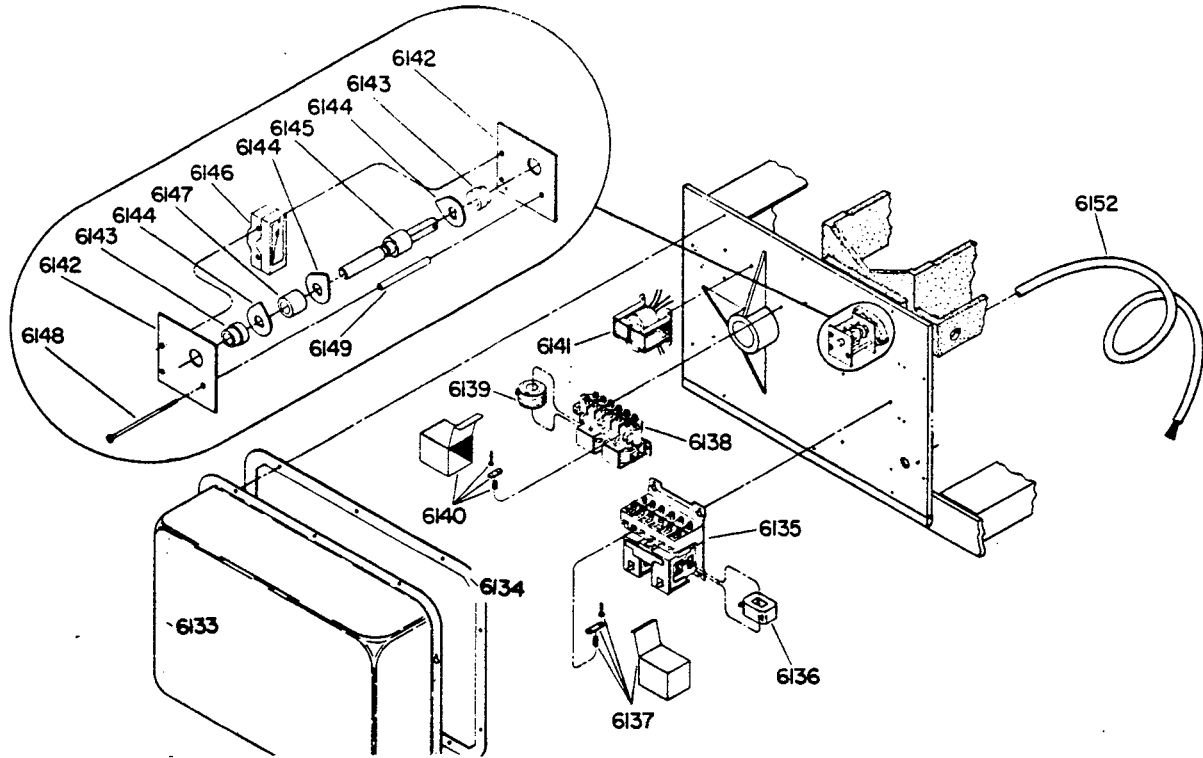
ITEM NUMBER	DESCRIPTION	PART NUMBER	QUANTITY
6133	Control Cover	22-08426-001	1
6134	Cover Gasket	22-08544-001	1
6135	Hoist Controller	22-09881-001	1
6136	Magnet Coil (Hoist Controller)110V	22-09883-001	2
	Magnet Coil (Hoist Controller)24V	22-09883-005	2
6137	Contact Kit	22-09882-001	2
	Contact Kit	22-09882-002	2
6138	Trolley Controller - Replaced by 23-07623-001 (See 6138 Pg. 4-6)	22-10501-003	1
6139	Contactor Coil 24V	22-10501-004	2
	Contactor Coil 115V	22-10501-005	2
6140	Contact Kit	22-10501-013	1
6141	Transformer		
	230/460V Pri. 115V Sec. 75VA	23-07228-051	1
	575V Pri. 115V Sec. 75 VA	23-07228-052	1
	230/460V Pri. 115V Sec. 150 VA	23-07228-092	1
	575V Pri. 115V Sec. 150 VA	23-07228-095	1
	230/460V Pri. 24V Sec. 150 VA	23-07228-088	1
6142	Support Plate	22-08535-001	2
6143	Bushing	22-08536-001	2
6144	Cam	22-08534-001	3
6145	Limit Shaft	22-08539-002	1
6146	Micro Switch	23-05987-003	3
6147	Spacer	22-08546-001	1
6148	Bolt	6-02-051-044-1	3
6149	Spacer	22-08540-002	1
6152	Main Line Cable (Lgth. To Suit)	22-04383-004	1

F5

HOIST CONTROLS

4-3

SEPT. 1980



HOIST CONTROLS

F5

SERIES C

4-4

SEPT. 1980

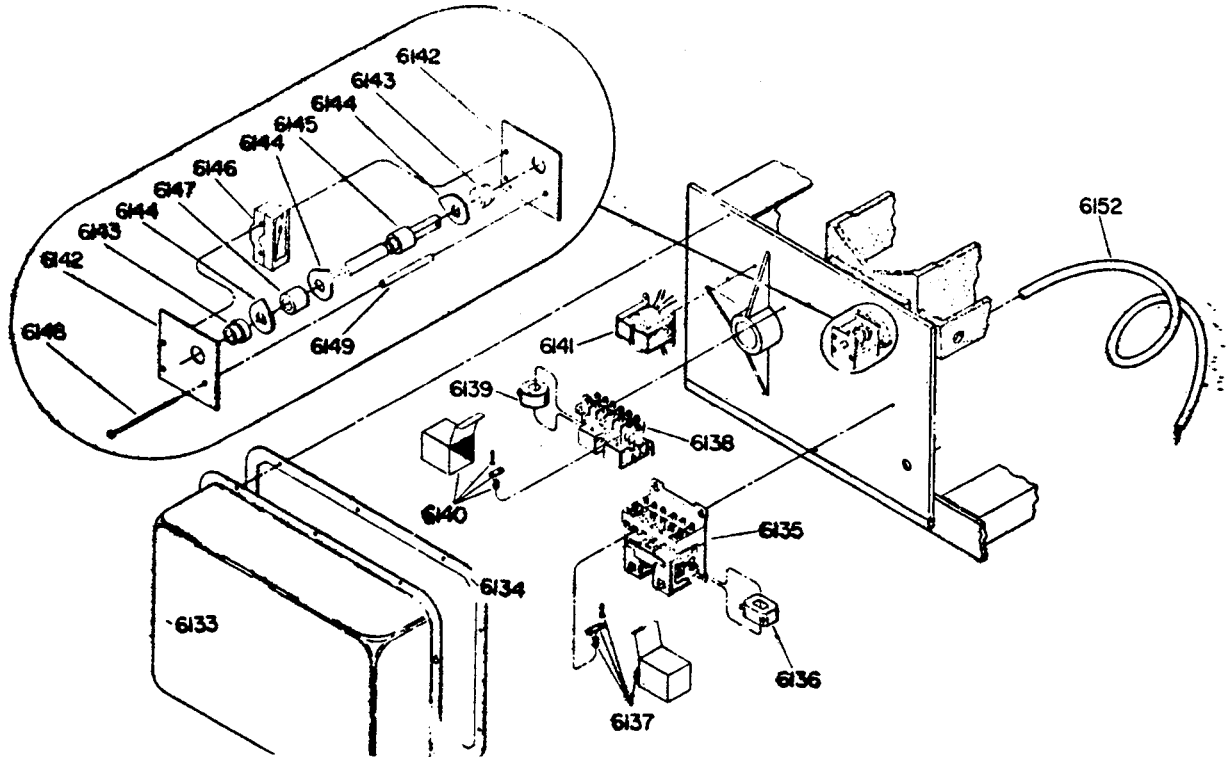
ITEM NUMBER	DESCRIPTION	PART NUMBER	QUANTITY
6133	Control Cover	22-08426-001	1
6134	Cover Gasket	22-08544-001	1
6135	Hoist Controller	23-07604-001	1
6136	Magnet Coil (Hoist Controller) 24V	23-07604-003	2
	Magnet Coil (Hoist Controller) 115V	23-07604-004	2
6137	Contact Kit	23-07604-014	6
6138	Trolley Controller Replaced By 23-07623-001 (See 6138 Pg. 4-6)	22-10501-003	1
6139	Magnet Coil (Trolley Controller) 24V	22-10501-004	2
	Magnet Coil (Trolley Controller) 115V	22-10501-005	2
6140	Contact-Kit	22-10501-013	1
6141	TRANSFORMER		
	230/460V Pri. 115V Sec. 75 VA	23-07228-051	1
	575V Pri. 115V Sec. 75 VA	23-07228-052	1
	230/460V Pri. 115V Sec. 150 VA	23-07228-092	1
	575V Pri. 115V Sec. 150 VA	23-07228-093	1
	230/460V Pri. 24V Sec. 150 VA	23-07228-088	1
6142	Support Plate	22-08535-001	2
6143	Bushing	22-08536-001	2
6144	Cam	22-08534-001	3
6145	Limit Shaft	22-08539-002	1
6146	Micro Switch	23-05987-003	3
6147	Spacer	22-08546-001	1
6148	Bolt	6-02-051-044-1	3
6149	Spacer	22-08540-002	1
6152	Main Line Cable Lgth. To Suit	22-04383-004	1

F5

HOIST CONTROLS

4-5

SEPT. 1980



HOIST CONTROLS

F5

SERIES D & E

4-6

SEPT. 1980

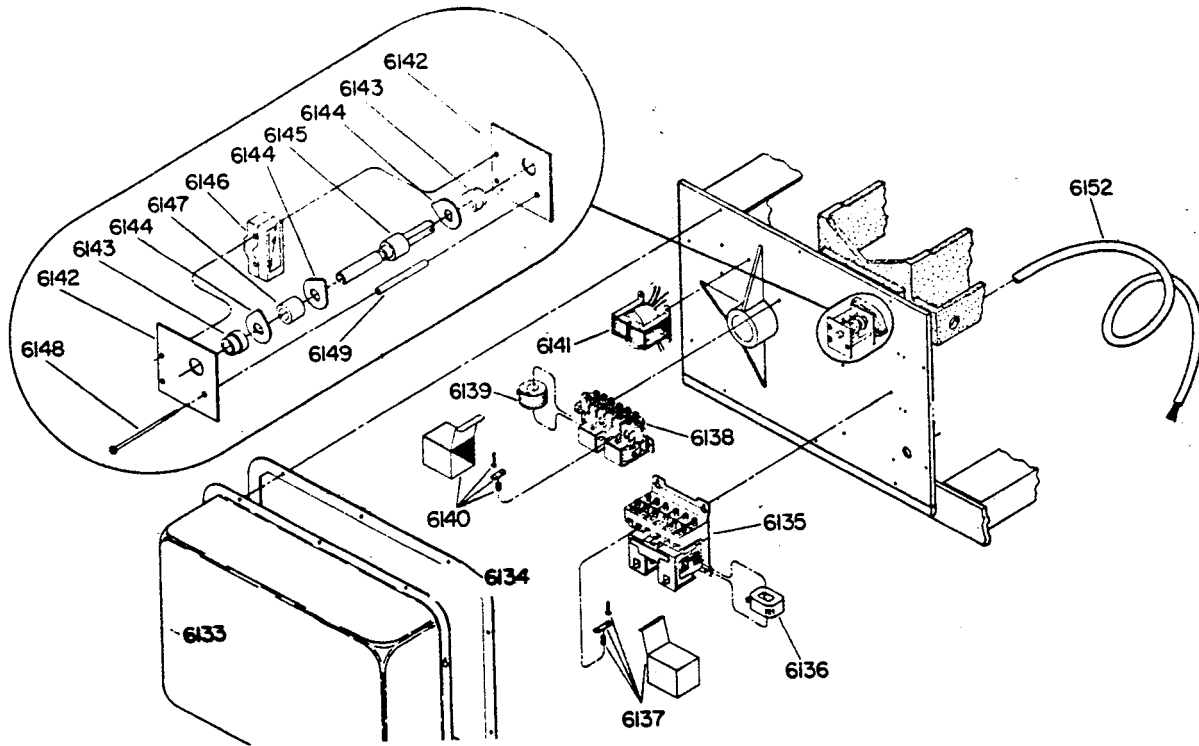
ITEM NUMBER	DESCRIPTION	PART NUMBER	QUANTITY
6133	Control Cover	22-08426-001	1
6134	Cover Gasket	22-08544-001	1
6135	Hoist Controller	23-07604-001	1
6136	Magnet Coil(Hoist Controller)24V	23-07604-003	2
	Magnet Coil(Hoist Controller)115V	23-07604-004	2
6137	Contact Kit(Hoist Controller)	23-07604-014	6
6138	Trolley Controller	23-07623-001	1
6139	Magnet Coil(Trolley Controller)24V	22-10755-003	2
	Magnet Coil(Trolley Controller)115V	22-10755-004	2
6140	Contact Kit	23-07623-010	6
6141	Transformer		
	230/460V Pri. 115 Sec. 75 VA	23-07228-051	1
	575V Pri. 115 Sec. 75 VA	23-07228-052	1
	230/460V Pri. 115V Sec. 150 VA	23-07228-092	1
	575V Pri. 115 Sec. 150 VA	23-07228-093	1
	230/460V Pri. 24V Sec. 150 VA	23-07228-088	1
6142	Support Plate	22-08535-001	2
6143	Bushing	22-08536-001	2
6144	Cam	22-08534-001	3
6145	Limit Shaft	22-08539-002	1
6146	Micro Switch	23-05987-003	3
6147	Spacer	22-08546-001	1
6148	Bolt	6-02-051-044-1	3
6149	Spacer	22-08540-002	1
6152	Main Line Cable (Lgth. to Suit)	22-04383-004	1

F5

HOIST CONTROLS

4-7

SEPT. 1980



HOIST CONTROLS

F5

SERIES Y

4-8

SEPT. 1980

ITEM NUMBER	DESCRIPTION	PART NUMBER	QUANTITY
6133	Control Cover	22-08426-001	1
6134	Cover Gasket	22-08544-001	1
6135	Hoist Controller	22-09881-001	1
6136	Magnet Coil(Hoist Controller)110V	22-09883-001	2
	Magnet Coil(Hoist Controller)24V	22-09883-005	2
6137	Contact Kit	22-09882-001	2
	Contact Kit	22-09882-002	2
6138	Trolley Controller Rev. Contactor	22-09494-001	1
6139	Contactor Coil 24V	22-09507-006	2
	Contactor Coil 120V	22-09507-001	2
6140	Contact Kit	22-09509-001	1
6141	Transformer		
	230/460V Pri. 115V Sec. 75VA	23-07228-051	1
	575V Pri. 115V Sec. 75VA	23-07228-052	1
	230/460V Pri. 115V Sec. 150VA	23-07228-092	1
	575V Pri. 115V Sec. 150VA	23-07228-093	1
	230/460V Pri. 24V Sec. 150VA	23-07228-088	1
6142	Support Plate	22-08535-001	2
6143	Bushing	22-08536-001	2
6144	Cam	22-08534-001	3
6145	Limit Shaft	22-08539-002	1
6146	Micro Switch	23-05987-003	3
6147	Spacer	22-08546-001	1
6148	Bolt	6-02-051-044-1	3
6149	Spacer	22-08540-002	1
6152	Main Line Cable (Lgth. to Suit)	22-04383-004	1

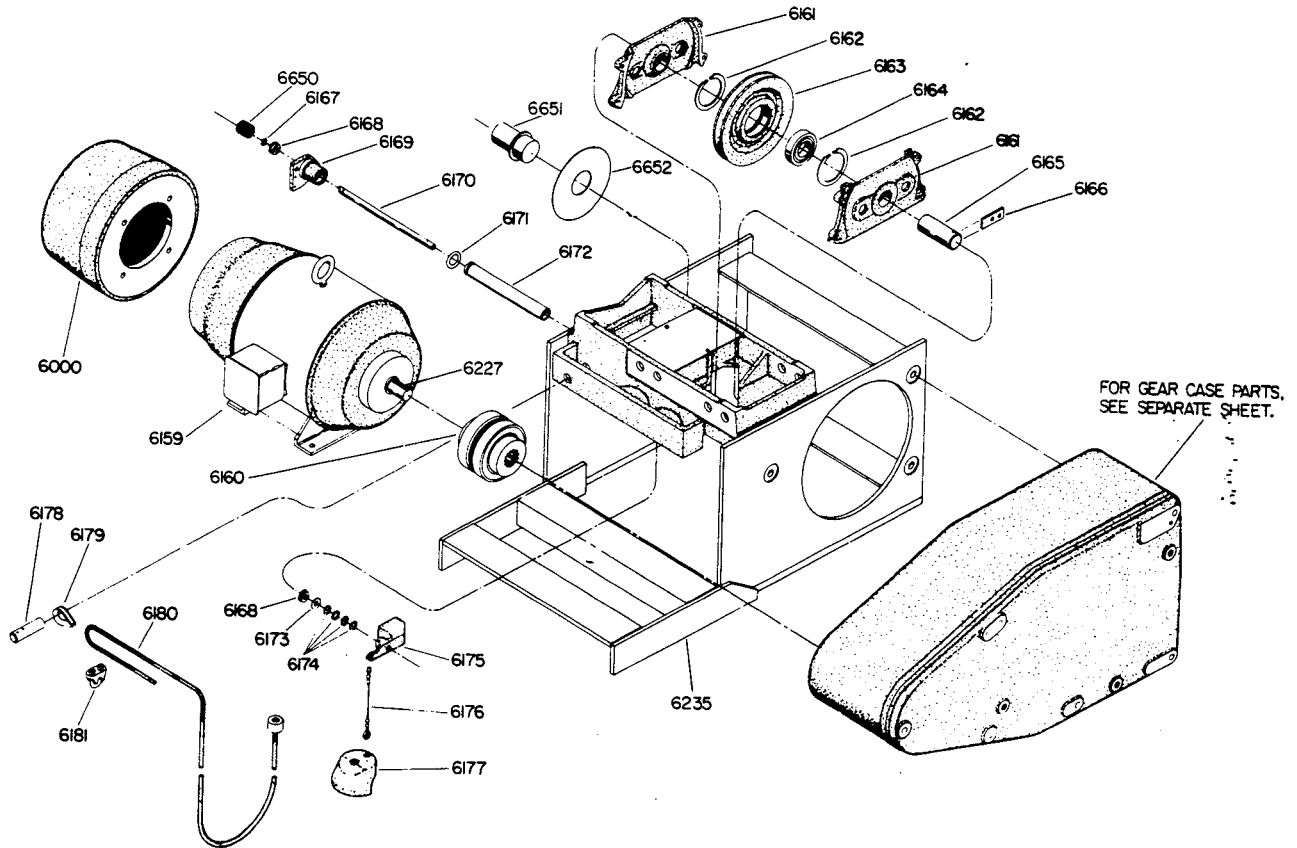
F5

FRAME & COMPONENTS

5-1

SERIES A, B, C, D, E, Y, Z

SEPT. 1980



ITEM NUMBER	DESCRIPTION	PART NUMBER	QUANTITY
6159	Hoist Motor 15 HP 230/460V Single Speed 15/5 HP 230V Two Speed 10 HP 230/460V Single Speed 15/5 HP 460V Two Speed	23-07706-005 23-07706-008 23-07706-002 23-07706-009	1 1 1 1
6160	Motor Coupling Sleeve & Cover Ass'y Splined Hub Bored Hub	24-05910-001 24-05910-007 24-05910-021	1 1 1
6161	Equalizer Parts-5,6,7-1/2 Ton Equalizer Sheave Guard	24-00171-005	2
6162	Snap Ring	22-06498-011	2
6163	Sheave	24-00148-011	1
6164	Ball Bearing	6-30-050-310-1	1
6165	Sheave Pin	23-00193-008	1
6166	Keeper Plate	22-00526-001	1

FRAME & COMPONENTS F5
 SERIES A, B, C, D, E, Y, Z 5-2
 SEPT. 1980

ITEM NUMBER	DESCRIPTION	PART NUMBER	QUANTITY
	Equalizer Parts - 10 Ton		
6161	Equalizer Sheave Guard	25-01700-001	2
6162	Snap Ring	22-06498-011	4
6163	Sheave	24-00148-011	2
6164	Ball Bearing	6-30-050-310-1	2
6165	Sheave Pin	23-01568-009	1
6166	Keeper Plate	22-01801-001	1
*	Thrust Washer	22-07811-005	4
*	Spacer	22-06291-001	4
*	Stud	22-00280-003	2
*	Stud	22-00280-015	2
6167	Snap Ring	22-06497-007	1
6168	Ball Bearing	6-30-102-007-0	2
6169	Mounting Bracket	22-08553-002	1
6170	Limit Extension Shaft	Consult Factory	1
6171	"O" Ring	22-08171-002	1
6172	Shaft Mounting Tube	Consult Factory	1
6173	Felt Washer	6-23-060-204-0	1
6174	Shim Washer	6-23-030-169-0	8
6175	Limit Washer	23-06635-003	1
6176	Limit Cable	Consult Factory	1
6177	Limit Weight	23-02305-017	1
6178	Dead End Pin 5,6,7-1/2 Ton	22-01582-001	1
6178	Dead End Pin 10 Ton	22-03338-001	1
6179	Thimble	22-00560-001	1
6181	Rope Clip	22-00661-001	3
6235	Main Frame	Consult Factory	1
6650	Limit Spring	22-09449-001	1

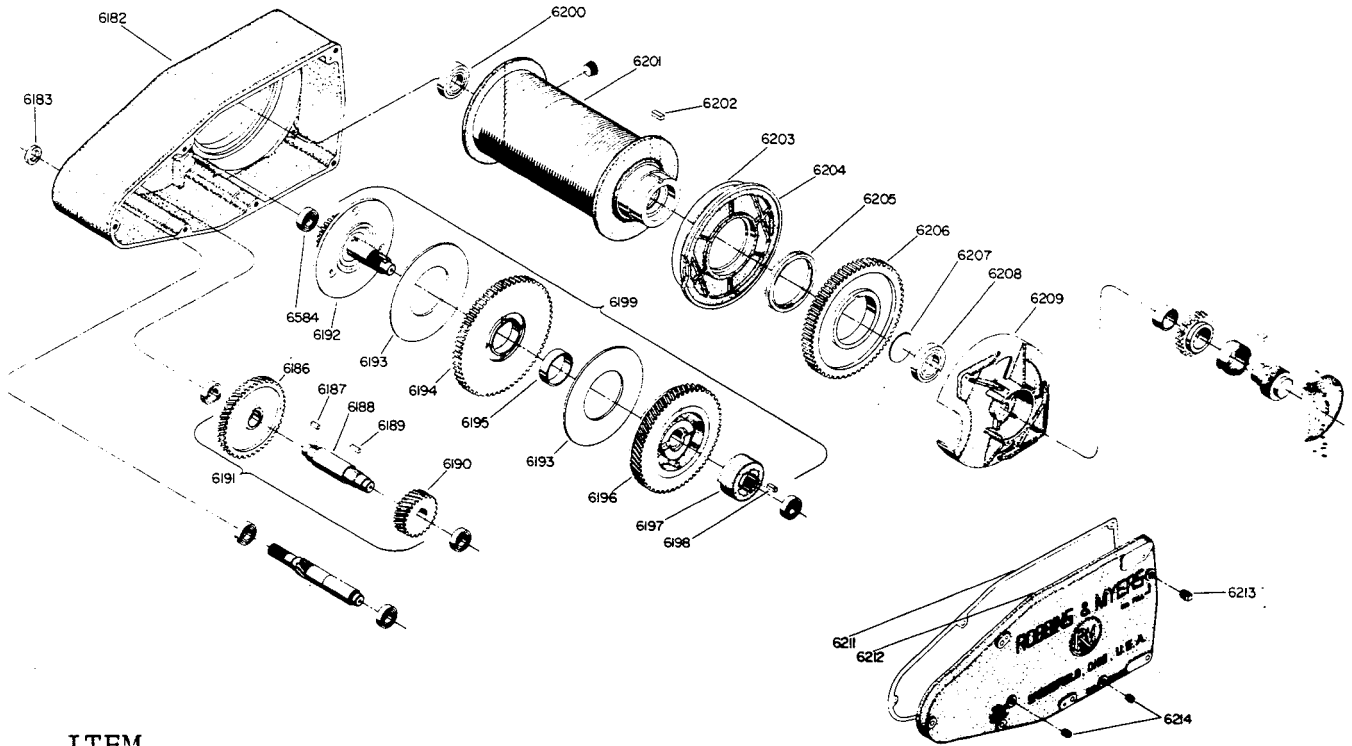
F5

GEAR CASE

6-1

SERIES A, B, C, D, E, Y, Z

SEPT. 1980



ITEM NUMBER	DESCRIPTION	PART NUMBER	QUANTITY
6182	Gear Case	25-02186-003	1
6183	Oil Seal	22-02792-001	1
Motor Gear			
6186	5T @ 40 FPM 6T @ 34 FPM 5&7-1/2 T @ 26FPM 10T @ 20FPM	23-06049-001	1
6186	6T @ 22FPM 7-1/2 T @ 17FPM 10T @ 14FPM	23-06049-002	1
6187	Key	6-11-028-020-0	1
6188	Intermediate Shaft	23-06050-001	1
6189	Key	6-11-028-026-0	1
Intermediate Pinion			
6190	6T @ 22 & 34FPM	24-04571-003	1
	5T @ 40FPM	24-04571-007	1
	5&7-1/2 T @ 26FPM 7-1/2T @ 17FPM	24-04571-008	1
	10T @ 14 & 20FPM	24-04571-009	1

GEAR CASE
SERIES A, B, C, D, E, Y, Z

F5
6-2
SEPT. 1980

ITEM NUMBER	DESCRIPTION	PART NUMBER	QUANTITY
6191	Intermediate Gearing Ass'y		
	5T @ 40FPM	24-04572-009	1
	6T @ 34FPM	24-04572-003	1
	5 & 7-1/2 T @ 26FPM	24-04572-010	1
	10T @ 20FPM	24-04572-011	1
	6T @ 22FPM	24-04572-012	1
	7-1/2 T @ 17FPM	24-04572-013	1
	10T @ 14FPM	24-04572-014	1
6192	Thrust Disc & Shaft Ass'y	25-02189-001	1
6193	Friction Disc	23-00176-002	2
6194	Ratch Gear	24-00137-004	1
6195	Bushing	23-00178-003	1
6196	Intermediate Gear & Spider Ass'y		
	6T @ 22 & 34FPM	24-04568-003	1
	5T @ 40FPM	24-04568-008	1
	5&7-1/2 T @ 26FPM 7-1/2T @ 17FPM	24-04568-009	1
	10T @ 14 & 20FPM 13FPM	24-04568-010	1
6197	Cam Nut	23-00175-001	1
6198	Cam Nut Key	22-00584-003	1
6199	Load Brake Ass'y		
	6T @ 22 & 34FPM	24-04569-013	1
	5T @ 40FPM	24-04569-017	1
	5&7-1/2 T @ 26FPM 7-1/2T @ 17FPM	24-04569-018	1
	10T @ 14 & 20FPM 13FPM	24-04569-019	1
6200	Ball Bearing	6-30-043-214-0	1
6201	Rope Drum	Consult Factory	1
6202	Key	6-11-030-024-0	1
6203	End Shield Gasket	23-01467-003	1
6204	End Shield	25-00069-002	1
6205	Oil Seal	22-02351-001	1
6206	Drum Gear	24-00133-004	1
6207	Welch Plug	22-03951-001	1
6208	Ball Bearing	6-30-041-214-0	1
6209	Drum Spider	25-00079-006	1
6211	Cover Gasket	24-04567-001	1
6212	Gear Case Cover	25-02187-006	1
6213	Vented Pipe Plug	22-04312-003	1
6214	Pipe Plug	6-10-012-004-1	2

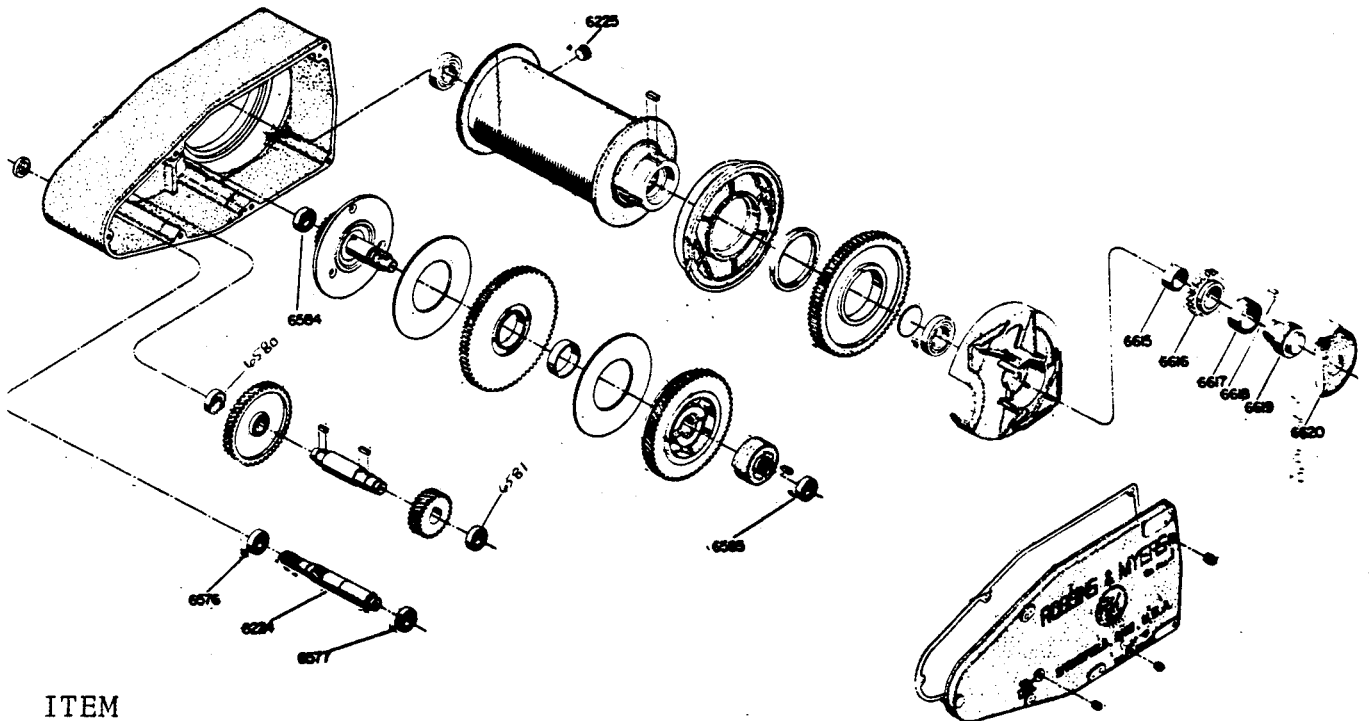
F5

GEAR CASE

6-3

SERIES A, B, C, D, E, Y, Z

SEPT. 1980



ITEM NUMBER	DESCRIPTION	PART NUMBER	QUANTITY
6224	Motor Shaft & Pinion		
	Shaft	23-06204-001	1
	Pinion	23-06205-001	1
	Key	6-11-024-026-0	1
	Shaft & Pinion 6T @ 22FPM	23-06204-002	1
	7-1/2T @ 17FPM 10T @ 14FPM		
6225	Pipe Plug	6-10-014-010-1	1
6576	Ball Bearing	6-30-041-307-1	1
6577	Ball Bearing	6-30-041-206-1	1
6580	Ball Bearing	6-30-041-207-1	1
6581	Ball Bearing	6-30-041-207-1	1
6584	Ball Bearing	6-30-041-207-1	1
6585	Ball Bearing	6-30-041-207-1	1
6615	Bushing	22-02829-003	1
6616	Clutch Pinion	23-06741-003	1
6617	Spring	22-09561-002	1
6618	Key	22-00482-015	1
6619	Clutch Shaft	23-06740-003	1
6620	Clutch Cover	24-05349-001	1

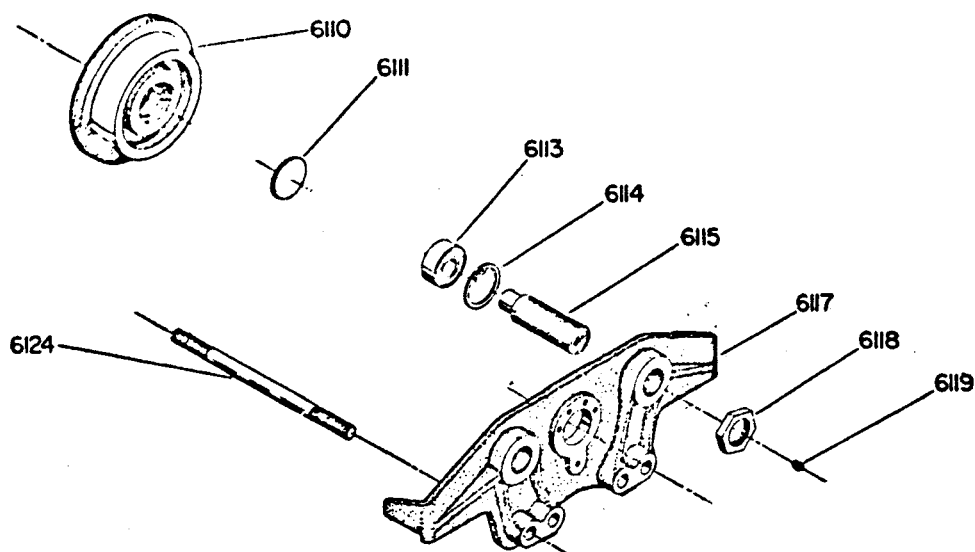
"B" TYPE TROLLEY

F5

SERIES A, Y, Z

7-1

SEPT. 1980



5, 6 & 7.5 TON

ITEM NUMBER	DESCRIPTION	PART NUMBER	QUANTITY
6110	Plain Wheel	24-02801-001	4
6111	Welch Plug	22-00504-001	4
6113	Ball Bearing	6-30-082-207-0	4
6114	Snap Ring	22-06498-015	4
6115	Wheel Stud	23-03230-015	4
6117	Side Frame	24-05153-001	2
6118	Lock Collar	22-00117-001	4
6119	Grease Fitting	22-02503-001	4
6124	Trolley Stud	22-03338-004	4

10 TON

ITEM NUMBER	DESCRIPTION	PART NUMBER	QUANTITY
6110	Plain Wheel	24-02801-003	4
6111	Welch Plug	22-00504-001	4
6113	Ball Bearing	6-30-082-208-0	4
6114	Snap Ring	22-02244-007	4
6115	Wheel Stud	23-05077-003	4
6117	Side Frame	24-05300-001	2
6118	Lock Collar	22-00490-001	8
6119	Grease Fitting	22-02503-001	4
6124	Trolley Stud	22-03338-007	4

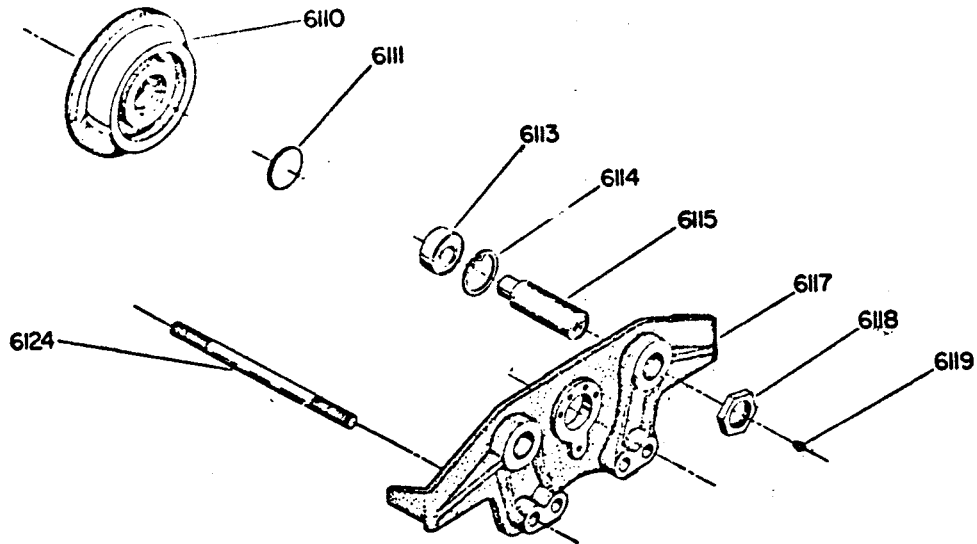
F5

"B" TYPE TROLLEY

7-2

SERIES B, C, D, E

SEPT. 1980



ALL CAPACITIES

ITEM NUMBER	DESCRIPTION	PART NUMBER	QUANTITY
6110	Plain Wheels	23-07177-017	4
6113	Ball Bearing	6-30-042-209-0	8
*	Snap Ring	22-06497-034	4
6114	Snap Ring	22-06498-022	4
6115	Wheel Stud	23-05077-008	4
6117	Side Frame	24-05784-002	2
6118	Lock Collar	22-00490-001	8
6124	Trolley Stud	22-03338-004	4

* NOT SHOWN

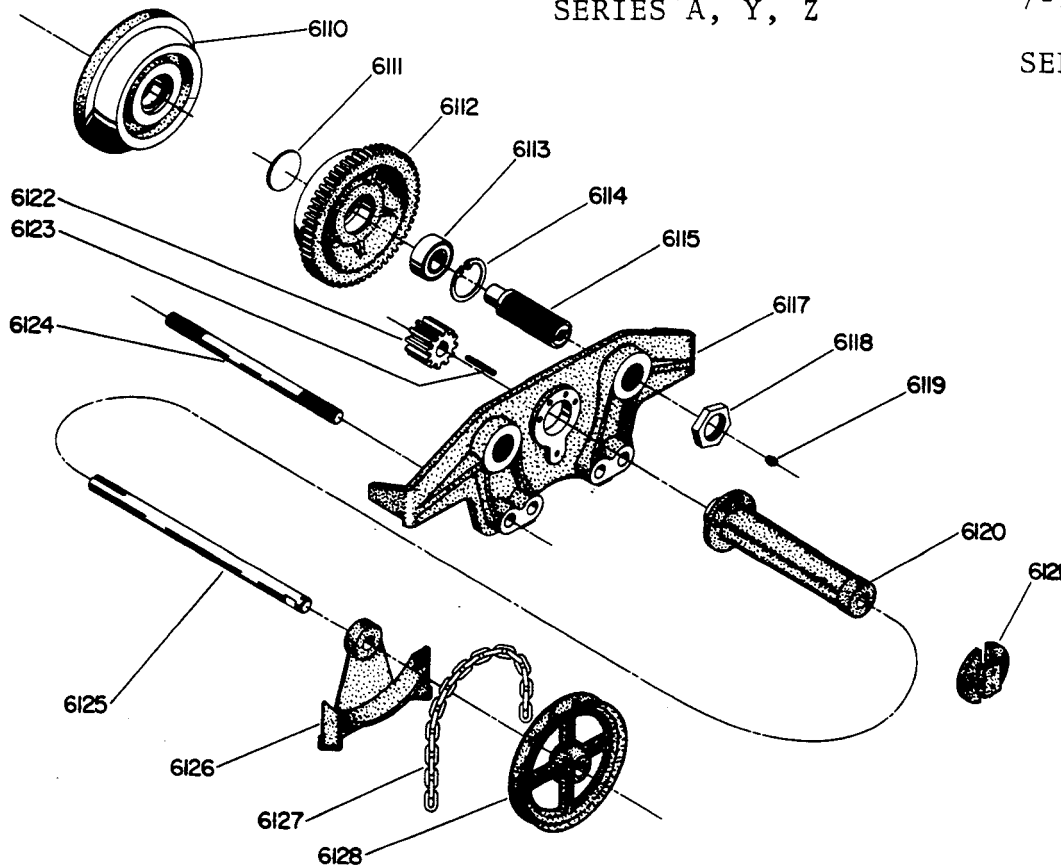
"BG" TYPE TROLLEY

F5

SERIES A, Y, Z

7-3

SEPT. 1980



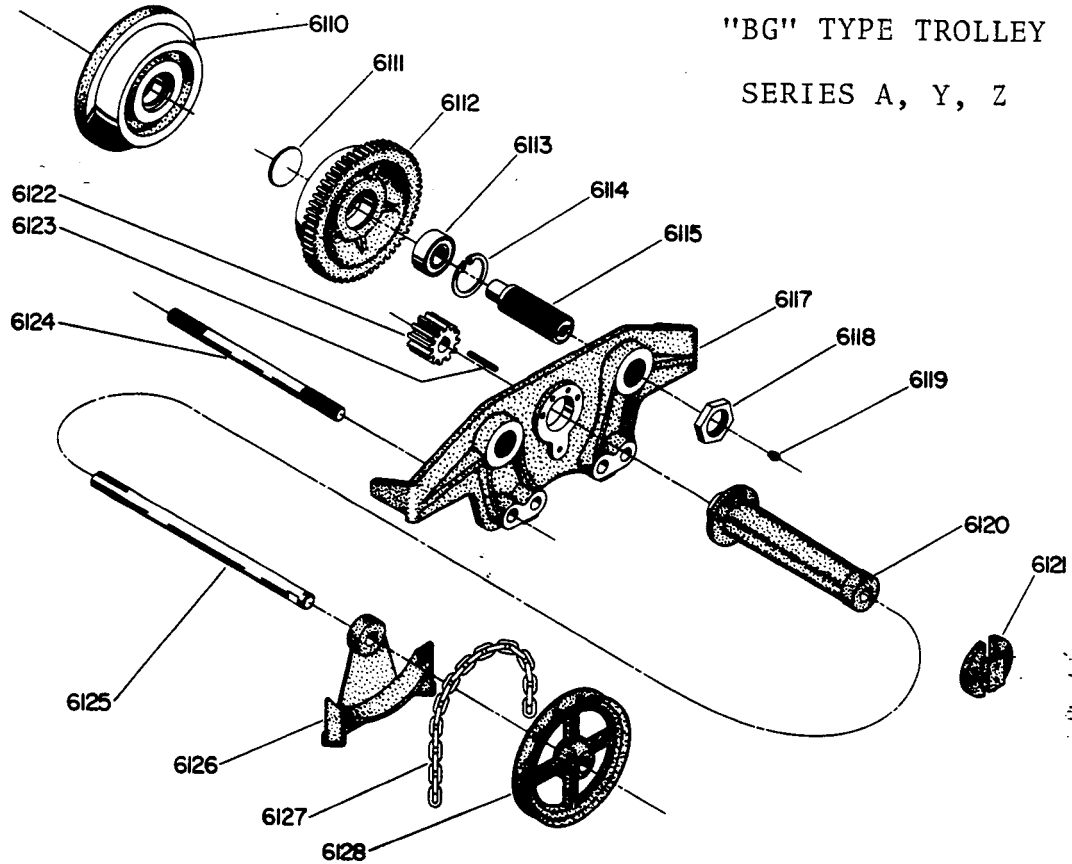
5, 6, 7.5 Ton

ITEM NUMBER	DESCRIPTION	PART NUMBER	QUANTITY
6110	Idler Wheel	24-02801-001	2
6111	Welch Plug	22-00504-001	4
6112	Geared Wheel	24-02802-001	2
6113	Ball Bearing	6-30-082-207-0	4
6114	Snap Ring	22-06498-015	4
6115	Wheel Stud	23-03230-015	4
6117	Idler Side Frame	24-05153-001	1
6117	Geared Side Frame	24-05153-003	1
6118	Lock Collar	22-00117-001	4
6119	Grease Fitting	22-02503-001	4
6122	Pinion	22-03256-002	1
6123	Key	6-11-024-024-0	1
6124	Trolley Stud	22-03338-007	4
6125	Hand Wheel Shaft	22-03340-001	1
6126	Hand Wheel Guard	24-00109-003	1
6127	Hand Chain **	22-00005-001	1
6128	Hand Wheel	24-00023-001	1

** Length Dependant On Lift Of Hoist

F5
 7-4
 SEPT. 1980

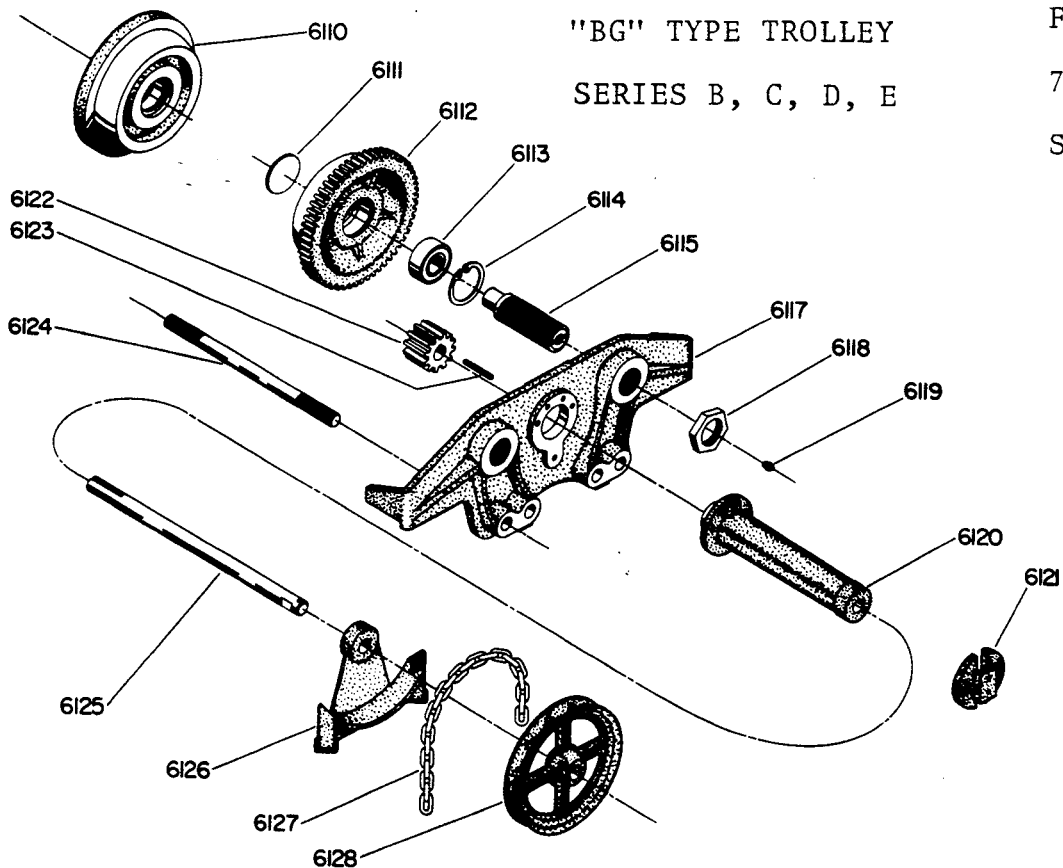
"BG" TYPE TROLLEY
 SERIES A, Y, Z



10 TON

ITEM NUMBER	DESCRIPTION	PART NUMBER	QUANTITY
6110	Idler Wheel	24-02801-003	2
6111	Welch Plug	22-00504-001	4
6112	Geared Plug	24-02802-003	2
6113	Ball Bearing	6-30-082-208-0	4
6114	Snap Ring	22-02244-007	4
6115	Wheel Stud	23-05077-003	4
6117	Idler Side Frame	24-05300-001	1
6117	Geared Side Frame	24-05300-002	1
6118	Lock Collar	22-00490-001	8
6119	Grease Fitting	22-02503-001	4
6120	Shaft Bracket	23-05109-012	1
6122	Pinion	22-03256-002	1
6123	Key	6-11-024-024-0	1
6124	Trolley Stud	22-03338-007	4
6125	Hand Wheel Shaft	22-03340-020	1
6126	Hand Wheel Guard	24-00217-003	1
6127	Hand Chain **	22-00005-001	1
6128	Hand Wheel	24-00216-003	1

** Length Dependant On Lift Of Hoist



"BG" TYPE TROLLEY
SERIES B, C, D, E

F5

7-5

SEPT. 1980

ALL CAPACITIES

ITEM NUMBER	DESCRIPTION	PART NUMBER	QUANTITY
6110	Idler Wheel	23-07177-017	2
6112	Geared Wheel Assembly	23-07480-004	2
6113	Ball Bearing	6-30-042-209-0	8
*	Snap Ring	22-06497-034	4
6114	Snap Ring	22-06498-022	4
6115	Wheel Stud	23-05077-008	4
6117	Geared Side Frame	24-05784-001	1
6117	Idler Side Frame	24-05784-002	1
6118	Lock Collar	22-00490-001	1
6120	Shaft Bracket	23-07484-003	1
6122	Pinion	22-10985-003	1
6123	Key	6-11-024-034-0	1
6124	Trolley Stud	22-03338-007	4
6125	Handwheel Shaft	23-07485-003	1
6126	Handwheel Guard	24-00217-004	1
6127	Hand Chain *	22-00005-001	1
6128	Hand Wheel	24-00216-026	1

** Length Dependant On Lift Of Hoist

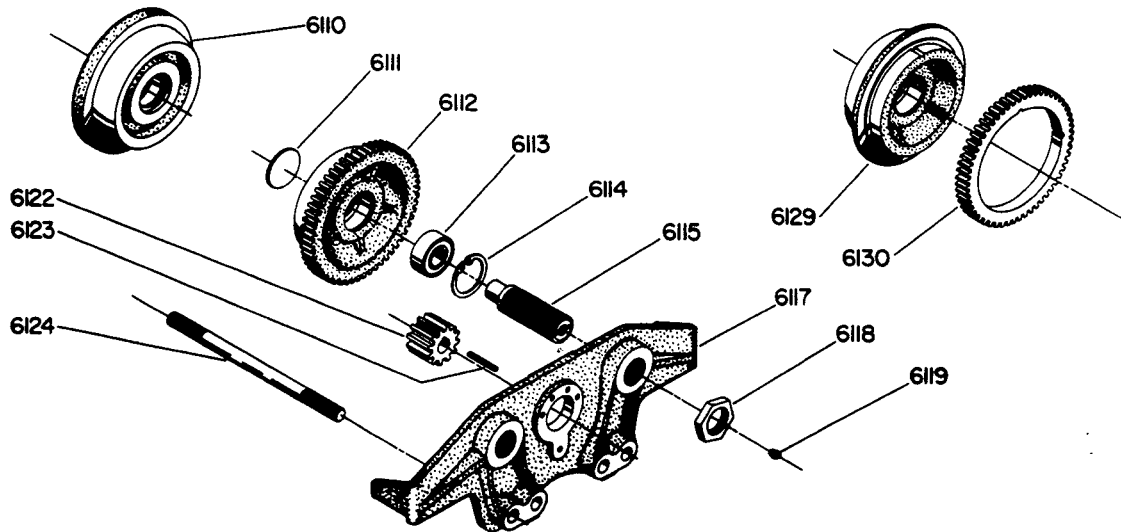
"M" TYPE TROLLEY

F5

SERIES A, Y, Z

7-6

SEPT. 1980



5, 6, 7.5 TON

ITEM NUMBER	DESCRIPTION	PART NUMBER	QUANTITY
6110	Idler Wheel	24-05550-001	2
6111	Bearing Seal	22-08646-003	4
6113	Ball Bearing	6-30-082-207-0	4
6114	Snap Ring	22-06498-015	4
6115	Wheel Stud	23-03230-015	4
6117	Idler Side Frame	24-05153-001	1
6117	Geared Side Frame	24-05153-002	1
6118	Lock Collar	22-00117-001	4
6119	Grease Fitting	22-02503-001	4
6122	Pinion	22-03256-029	1
6124	Trolley Stud	22-03338-004	4
6129	Geared Wheel	24-05551-001	2
6130	Wheel Gear	23-05097-002	2

10 TON

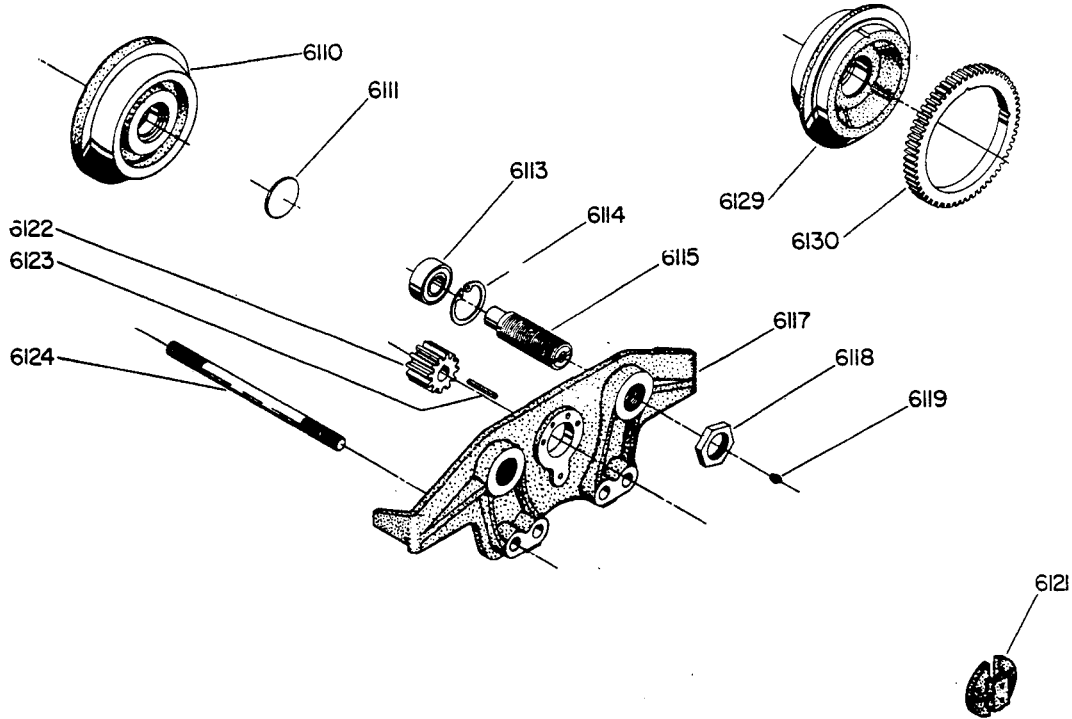
6110	Idler Wheel	24-05550-002	2
6111	Bearing Seal	22-08646-004	4
6113	Ball Bearing	6-30-082-208-0	4
6114	Snap Ring	22-02244-007	4
6115	Wheel Stud	23-05077-003	4
6117	Idler Side Frame	24-05300-001	1
6117	Geared Side Frame	24-05300-002	1
6118	Lock Collar	22-00490-001	8
6119	Grease Fitting	22-02503-001	4
6122	Pinion	22-03256-085	1
6124	Trolley Stud	22-03338-007	4
6129	Geared Wheel	24-05551-002	2
6130	Wheel Gear	23-05097-002	2

"M" TYPE TROLLEY
 SERIES B, C, D, E

F5

7-7

SEPT. 1980



ITEM NUMBER	DESCRIPTION	PART NUMBER	QUANTITY
6110	Idler Wheel	23-07177-017	2
6113	Ball Bearing	6-30-042-209-0	8
*	Snap Ring	22-06497-034	4
6114	Snap Ring	22-06498-022	4
6115	Wheel Stud	23-05077-008	4
6117	Geared Side Frame	24-05784-001	1
6117	Idler Side Frame	24-05784-002	1
6118	Lock Collar	22-00490-001	8
6121	Clamp Plate	22-11044-002	1
6122	Pinion	22-10985-003	1
6123	Key	6-11-024-034-0	1
6124	Trolley Stud	22-03338-004	4
6129	Geared Wheel Assembly	23-07480-004	2

* NOT SHOWN



000000