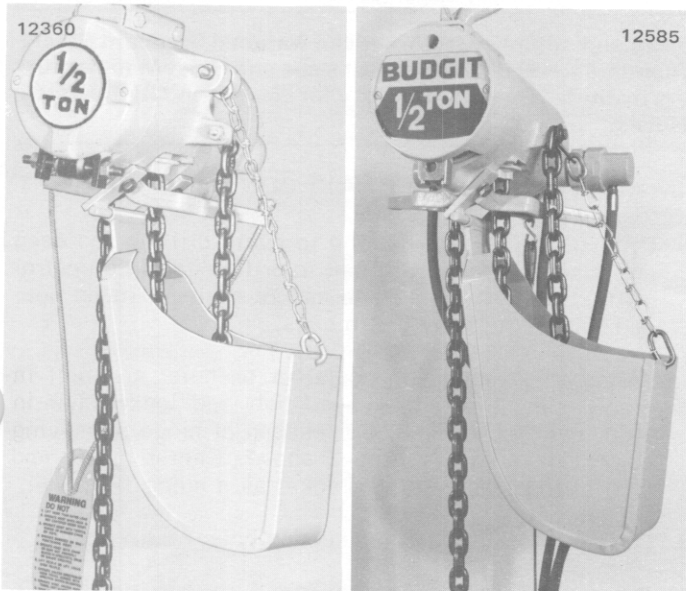


BUDGIT**LIFTTECH**LIFT-TECH INTERNATIONAL, DIVISION OF
COLUMBUS MCKINNON CORPORATION
MUSKEGON, MICHIGAN 49443-0769**INSTRUCTION INSTALLING
BUDGIT® AIR HOIST
CHAIN CONTAINERS**

Cat. No.	Chain Type	Maximum Chain Cap.	Hoist Lift Container			*Hanger Parts Kit
			Will Accomodate	1 Ton	1 Ton	
902631	Coil	25 ft.	25 ft.	12 ft.	429756-97	
902632	Roller	15 ft.	15 ft.	Do not use	326951-50	
902633	Roller	30 ft.	30 ft.	15 ft.	326951-50	
902634	Coil (S.R.)	25 ft.	25 ft.	12 ft.	429756-98	

*Hanger Parts Kits contain: one support chain; two split links; chain hanger plate; one 1/4-20x2-1/4" Hex Hd. bolt, lockwasher and nut; and two 5/16-18x5/8" Hex Hd. bolts and lockwashers.

**FIGURE 1A.****FIGURE 1B.**

Catalog No. 902631 Chain Container Installed on Coil Chain Hoists.

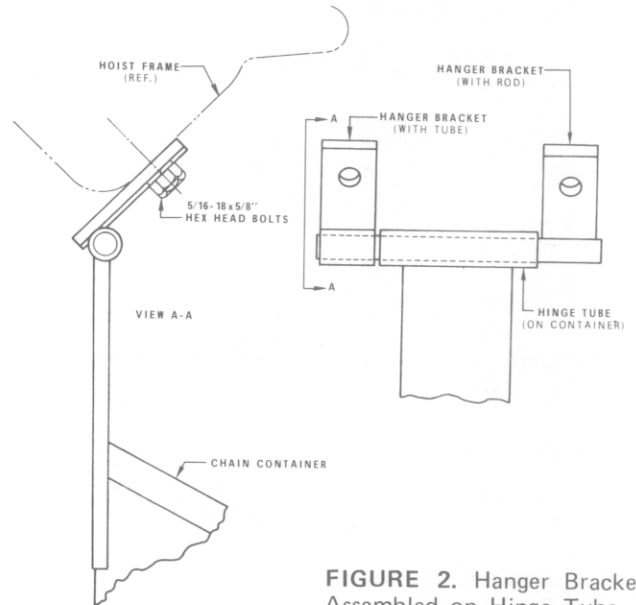
GENERAL

All parts required for correct installation are included with each BUDGIT Chain Container. The container is easily installed in most cases without removing the hoist from its suspension, following the instructions below. When container is installed on certain older model BUDGIT Air Hoists, it will be necessary to drill and tap hanger bracket holes in hoist frame to mount container.

1. Operate hoist to run load hook to one foot of its low position. This will shorten loop in tail end of load chain so it doesn't interfere during installation, and also assure that chain is correctly fed into container after installation is completed.
2. Shut off air supply to hoist and proceed as outlined below.

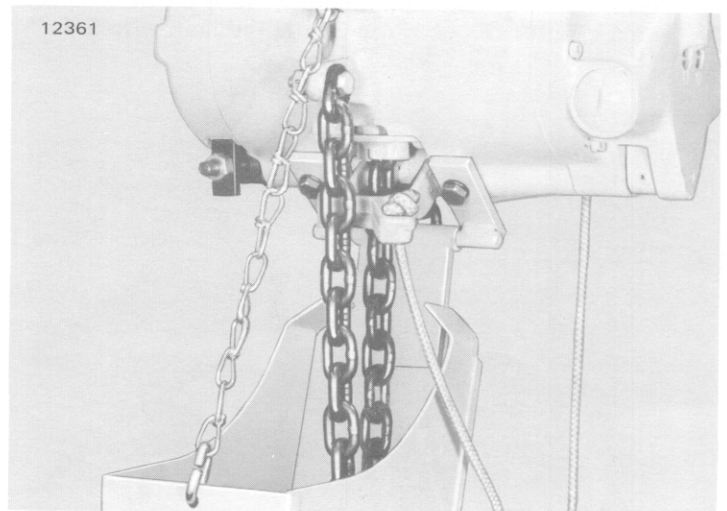
INSTALLATION

These instructions apply to both roller chain containers and coil chain containers, except as noted.

**FIGURE 2.** Hanger Bracket Assembled on Hinge Tube – Roller Chain Container

1. On roller chain containers, assemble hanger bracket to hinge tube at top of container. See Figure 2. NOTE: Hanger bracket is permanently attached on coil chain containers.
2. Position container at bottom of hoist with hanger bracket holes aligned with tapped holes on sides of control shaft bosses (Figure 3). Secure bracket with two 5/16-18x5/8" hex head bolts and lockwashers provided.

NOTE: If hoist frame does not have tapped holes on sides of control shaft bosses, it will be necessary to remove hoist from support and drill and tap holes on chain anchor side of frame following instructions on back of page.

**FIGURE 3.** View Showing Hanger Bracket Bolted to Hoist Frame

